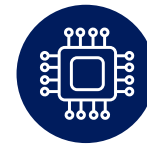
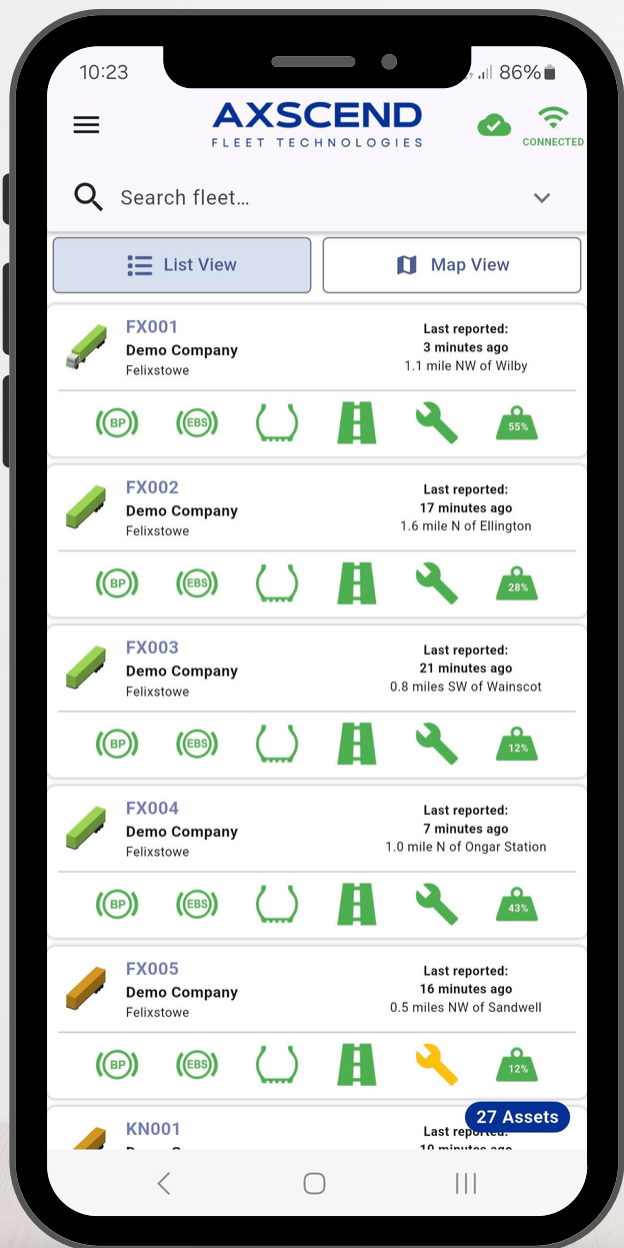


# AX INSTALL

A quick start guide to the AX Install Application



Self-install DCUs without needing a visit from an Axscend technician.



An intuitive step-by-step wizard to guide you through the installation process.

Table of Contents

*Getting Started* ..... 2

    How to Download AX Install ..... 2

*AX Install App* ..... 3

    Select Job Card / Asset ..... 4

    Installation Wizard ..... 4

        Self-Test..... 5

        TPMS tests ..... 6

        Installation Evidence ..... 7

    Troubleshooting..... 9

*Document History* ..... 10

## Getting Started

The AX Install application is available on the Apple App Store or Google Play Store.

### How to Download AX Install

Use the relevant link to your corresponding device app store below.

[Apple App Store](#)

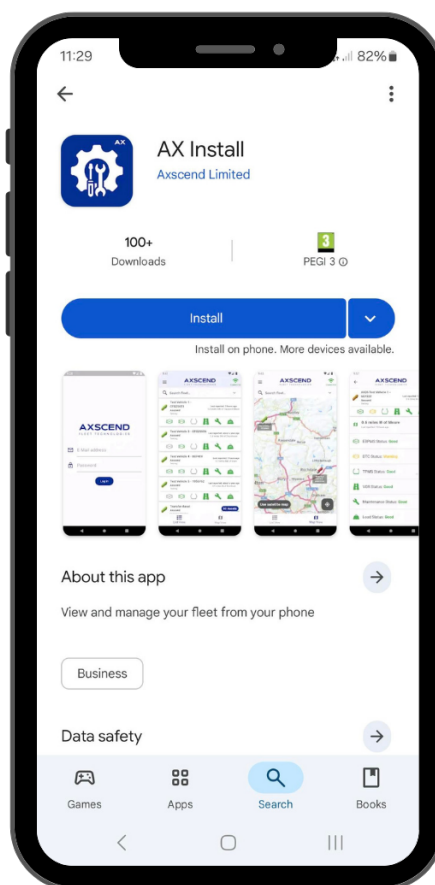


[Google Play Store](#)



Alternatively, you can search for the term **AX Install** in your device's app store.

Axscend Limited is the app publisher, and the preview should be like the example provided.

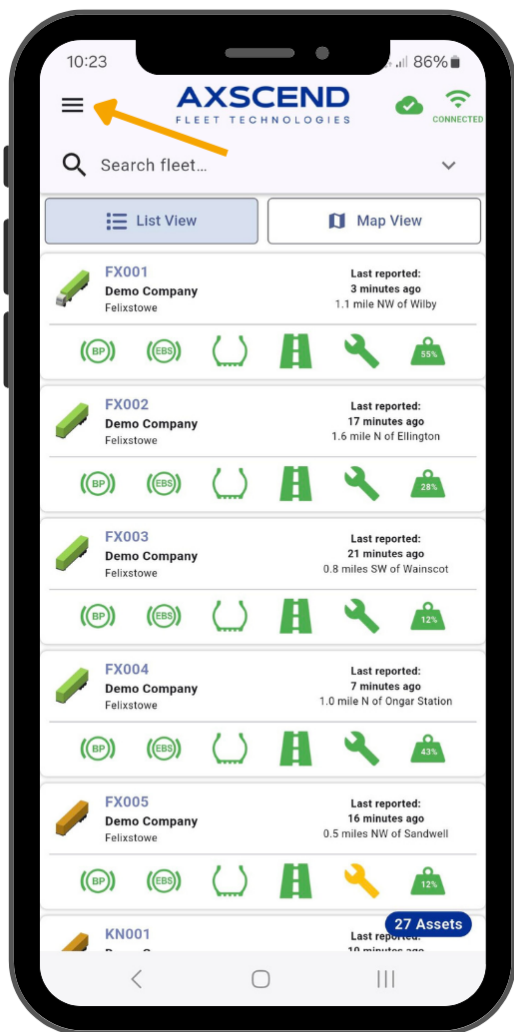


## AX Install Application

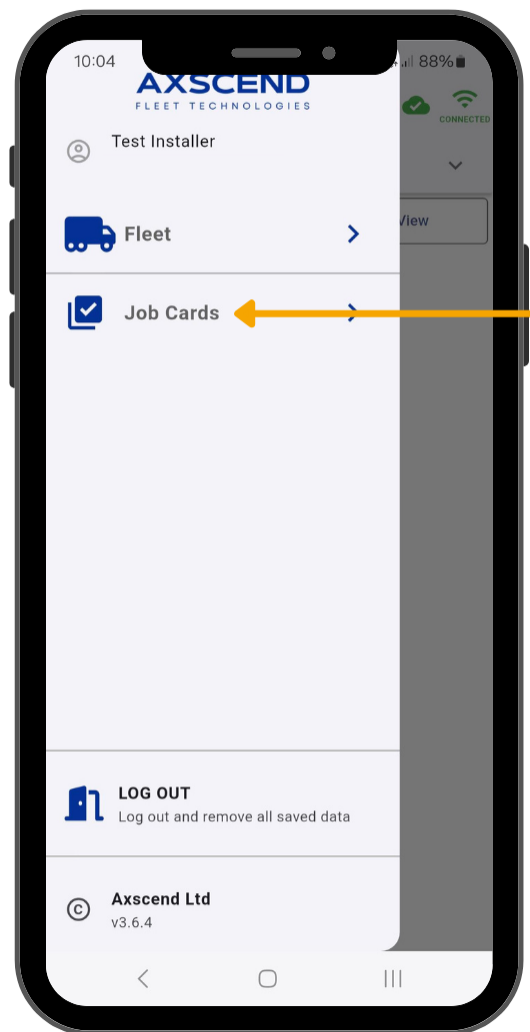
To access the AX Install application, you should either use your Axscend portal login details or have been provided with details to authenticate.

 You may open the app straight to the Job Cards page depending on your permissions.

1. Click the menu icon in the top left corner to expand the sidebar.



2. Then, select Job Cards from the sidebar.




On the Job Cards page, you should select the relevant job card associated with the installation asset.

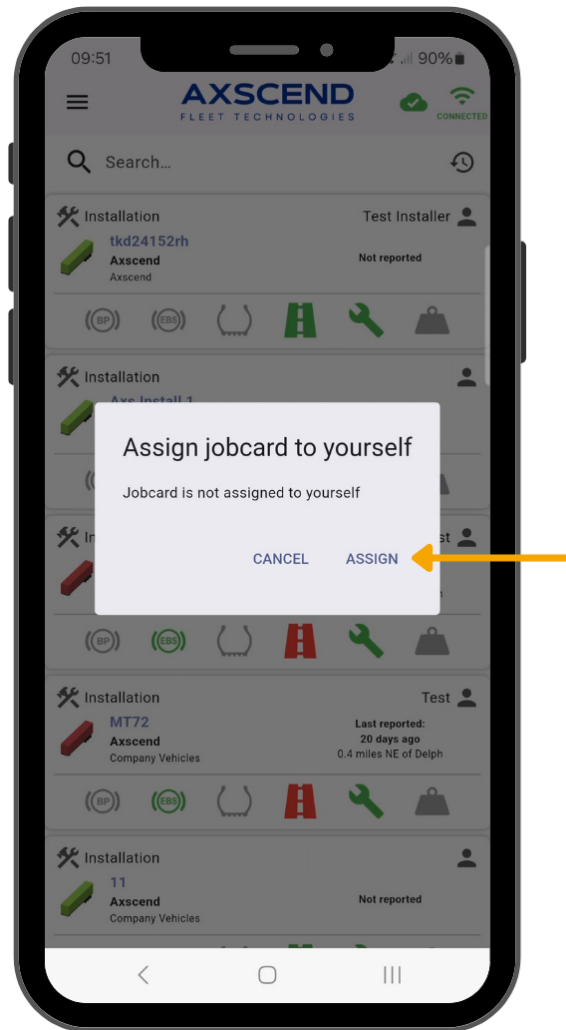
## Select Job Card / Asset

1. Select the **installation** Job Card which is linked to the installation asset.

You can use the search bar for quicker navigation.

 Can't see your asset? Please get in touch with Axcend for support.

2. You might be prompted to assign the Job Card to yourself.
  - a. If so, click **Assign**



## Installation Wizard

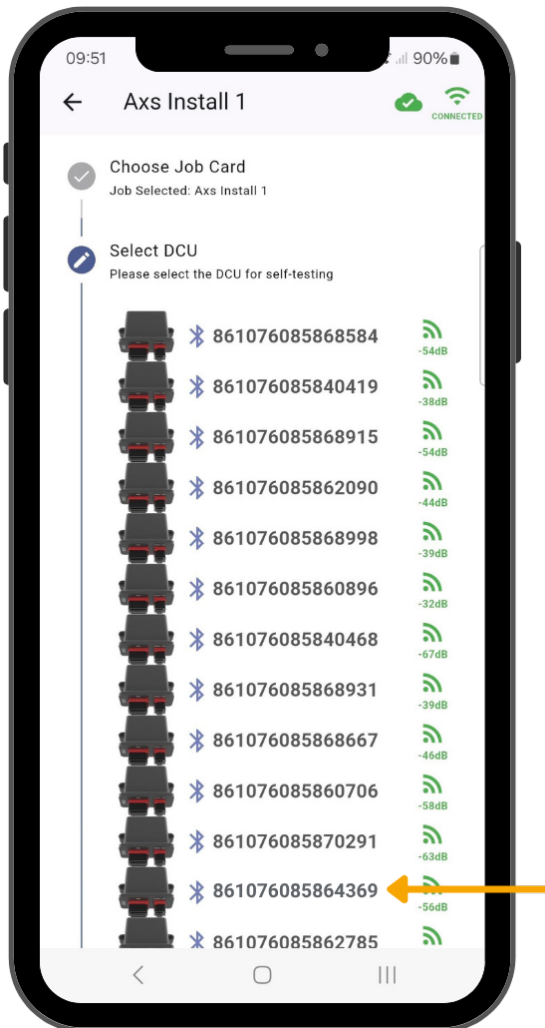
The Installation Wizard will open, displaying the selected asset at the top.

Work through each step sequentially to complete the installation. Step 1 has been completed by selecting the appropriate job card.

1. Find the ESN details printed on the DCU.



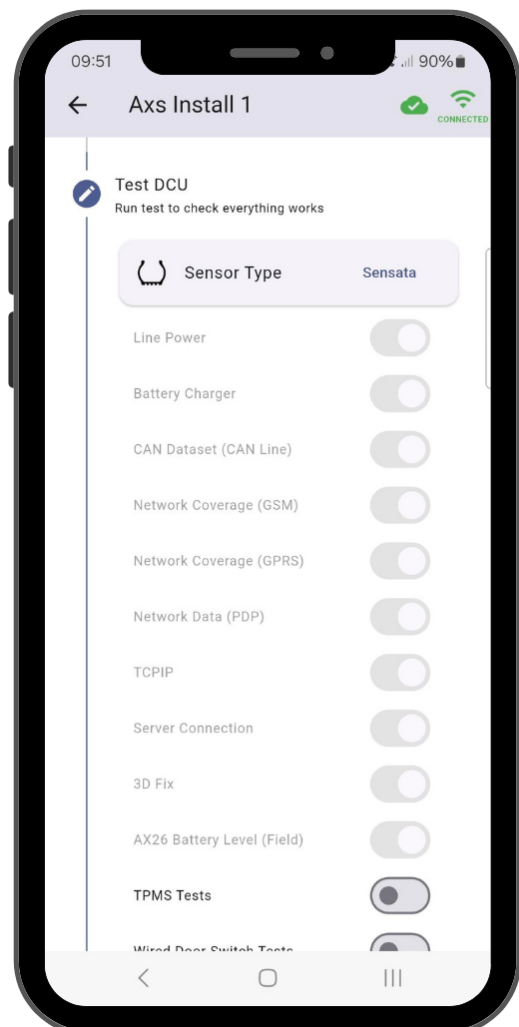
2. Select the relevant DCU from the list, as shown in the example below.



3. You will be prompted to verify and confirm the DCU ESN before proceeding with the installation. Click **it is correct** to proceed.

### Self-Test

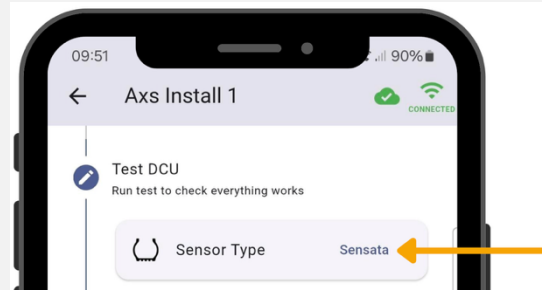
4. Next is the self-test stage, which will ensure that the DCU has power, has established a connection to the Axcend server, and is connected to the EBS.
5. You will be asked if you want to include any additional self-tests, for example, TPMS tests.



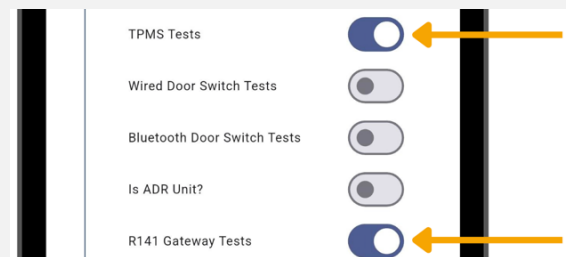
TPMS tests

To include TPMS sensor tests in the DCU self-test:

a. Ensure you have selected the appropriate TPMS sensor type at the top of the self-test.

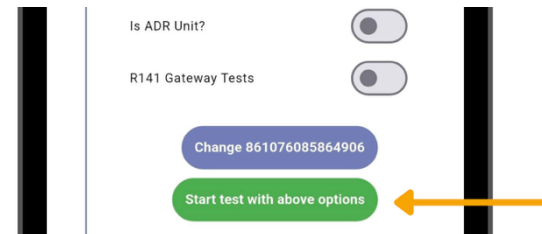


b. Then scroll down to include TPMS tests and R141 Gateway Tests.



💡 Similarly, include door switch tests if necessary. You can also mark the trailer as ADR.

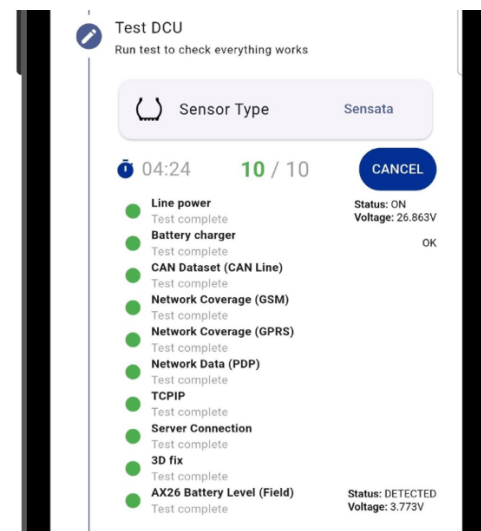
6. Once all relevant self-tests have been selected, click **start test with above options**.



The process will run through each test one by one, showing either a completed state or a failure.

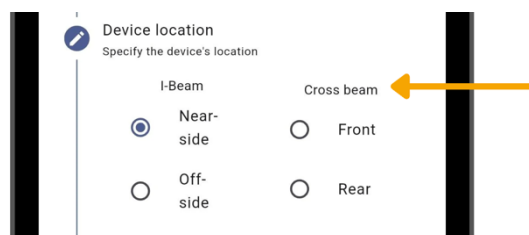
💡 If you are in an area with poor signal, you may fail the network tests. You can skip these after the 5-minute timeout period had elapsed.

⚠️ If any other tests fail, including the TPMS tests, please contact Axcend for support.



Once the self-test is complete, you can proceed to the next stages in the installation wizard.

- You will need to input the location of the DCU on the trailer.

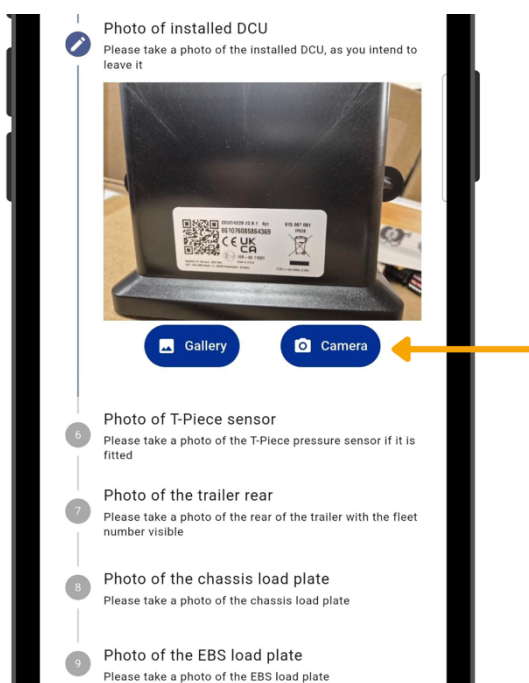


### Installation Evidence

The final stages of the installation include taking several images of the completed process. The essential images required include the installed DCU, the EBS load plate and the chassis load plate. **Please ensure that all items are provided, and the information on the load plates is visible and legible.**

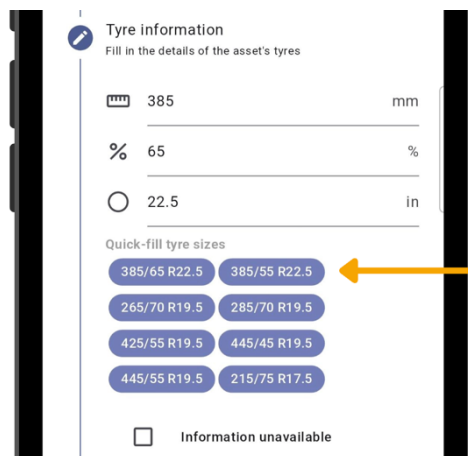
We request these images to maintain a record of which DCU has been installed on which trailer. The EBS and chassis load plates also provide extremely useful information when calculating EBPMS brake performance values.

- Click through each image stage and choose either to upload an existing image from your device gallery or take a new image via the camera.



A picture of the trailer's rear is also helpful for completeness of the installation.

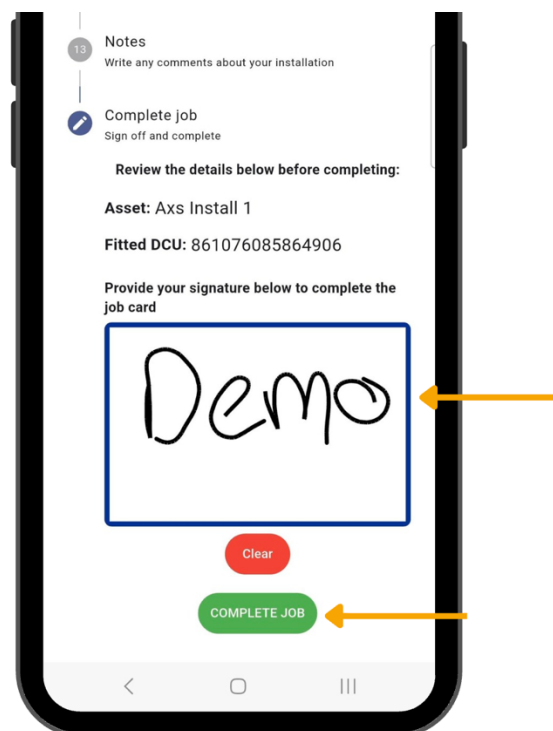
- 9. Fill in the asset's tyre information. You can use one of the pre-set options to autofill the fields.



You will have the option to add any relevant notes to the installation, such as if parts of the self-test failed due to bad signal.

- 10. You should sign off the job card by providing a signature in the box.

- 11. Complete the installation by clicking **Complete Job**



✓ You have now completed the installation of the DCU.

## Troubleshooting

*"I don't have access to AX Install."*

To access AX Install you should either use your Axscend portal login details or have been provided with details to authenticate. If you do not have access, please contact your line manager for assistance.

---

*"I can't find a job card with my installation asset."*

If you cannot find your asset in the job card list, please contact Axscend Support for further assistance.

---

*"Some of the self-tests failed."*

If you are in an area with a poor signal, you may fail the network tests. However, if any of the other stages of the self-test fail, please contact Axscend Support.

---

*"Some of the self-tests failed."*

If you are in an area with poor signal, you may fail the network tests. However, if any of the other stages of the self-test fail then please contact Axscend Support.

---

*"I've installed a DCU on the incorrect asset."*

If you have accidentally installed a DCU and linked it to the wrong job card, then please contact Axscend Support, who will be able to assist further in correcting this.

---

*"Another detail of the installation was inputted incorrectly."*

If you have inputted incorrect information, such as the location of the trailer, incorrect images or tyre sizes, then please contact Axscend Support who will be able to assist further in correcting these.

## Document History

<b>Version</b>	<b>Date</b>	<b>Author</b>	<b>Comment</b>
<b>Version 1</b>	11-08-2025	Carys-Anne Evans	Draft
<b>Version 2</b>	13-08-2025	Carys-Anne Evans	Draft